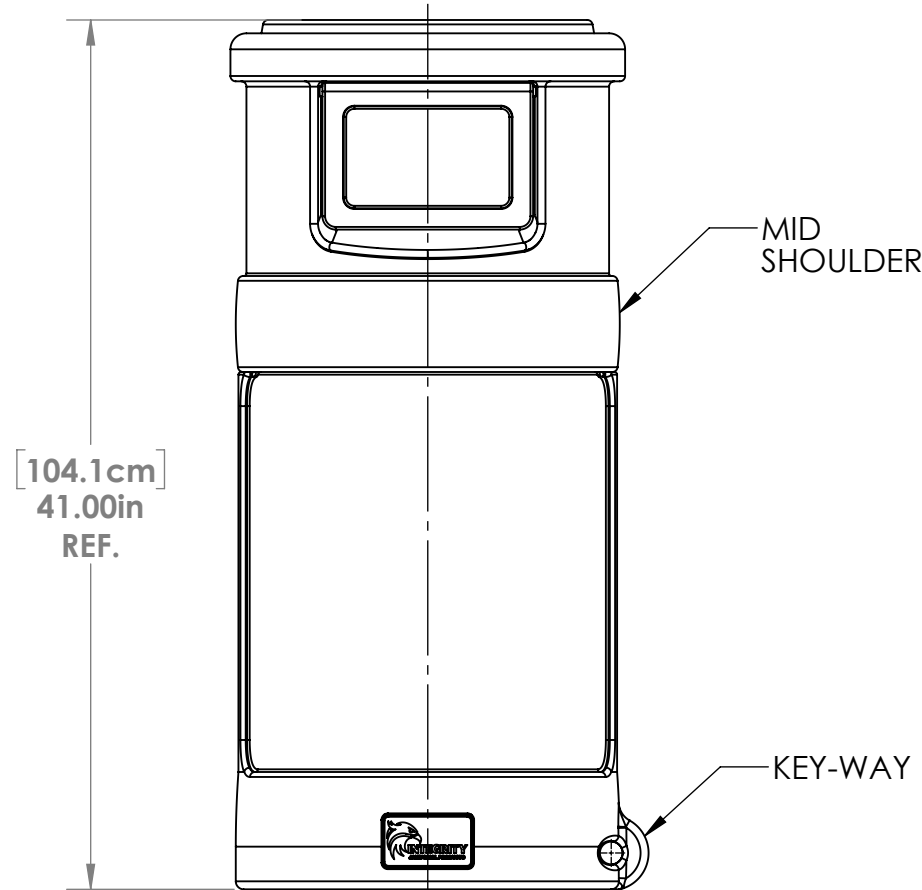
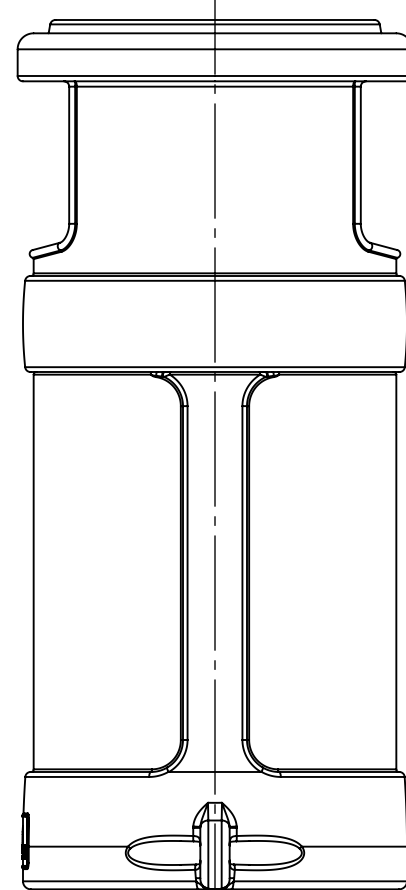


TOP VIEW



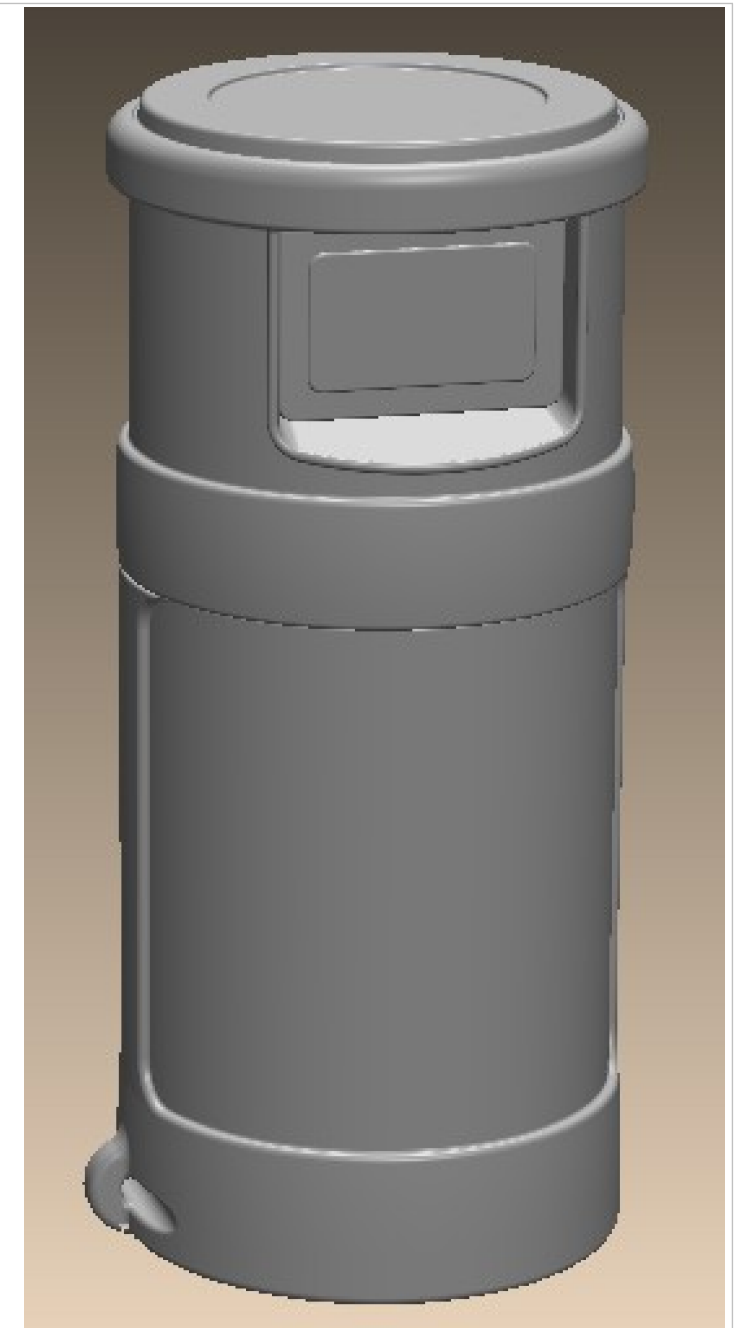
FRONT VIEW



SIDE VIEW



EXPANDED VIEW



GREY COLOR SHOWN  
FOR DISPLAY ONLY



OPEN DOOR

#### FEATURES:

1. THE UNIQUE "KEY-WAY" BASE FEATURE CAN SECURE UNIT FROM THEFT AND HIGH WINDS.
2. MID-SHOULDER DESIGN ALLOWS TOP TO BE SECURED WHILE HIDING UNSIGHTLY "BAG SKIRTS".
3. QUIET DUAL SELF-CLOSING GRAVITY DOORS KEEP DEBRIS AND ODORS INSIDE.
4. REMOVEABLE TOP ALLOWS EASY ACCESS WITH NO CLUMSY STRAPS.
5. 24 GALLON (91 LITER) CAPACITY WITH NO METAL PARTS TO RUST OR CORRODE.
6. USE WITH OR WITHOUT RIDGID LINER WHICH CAN BE FURNISHED IN PLASTIC OR METAL.
7. SMOOTH CORNERS, EDGES AND LIGHTLY TEXTURED SURFACES FOR EASY CLEANING.
8. MADE IN AMERICA OF DURABLE POLYETHYLENE WEATHERPROOF CONSTRUCTION.
9. FIRE RESISTANT DESIGN CONTAINS AND EXTINGUISHES FIRE.
10. MULTIPLE COLOR CHOICES AND OPTIONAL CUSTOM COLORS CAN BE MADE AVAILABLE.



PRODUCT:	FLAT TOP TRASH CAN
MODEL:	1432I
MATERIAL:	LLDPE
SIZE:	24 Gallons (91 Liters)
DATE:	10/1/2025
CONTACT:	IntegrityCommercialProducts.com